



# ePrescribing in Medtech Evolution



eRx improves communication between doctors and pharmacists to ensure patients receive the medication their doctor intended.

- Improved patient safety
- Fully Integrated, supported & free to Medtech Evolution customers

## PRIVACY & SECURITY

eRx is independently audited for privacy to ensure it meets all obligations under the Privacy Act 1988. eRx is also accredited under the Australian Government National eAuthentication Framework around security and is independently verified as compliant with the requirement for information security for a "Medical-in-Confidence" system, as stipulated by the Commonwealth Government.

## Before you begin the steps, ensure that you:

1. Have the PKI Keys / Medicare Certificates for your site. Ensure they are site specific.
2. Have your PIC password. Your password comes in a letter from Medicare with your PKI keys.
3. Have registered with eRx at [www.ernx.com.au](http://www.ernx.com.au) for each doctor.



# How to activate eRx in Medtech Evolution

## A: Install eRx Adaptor

### Step 1

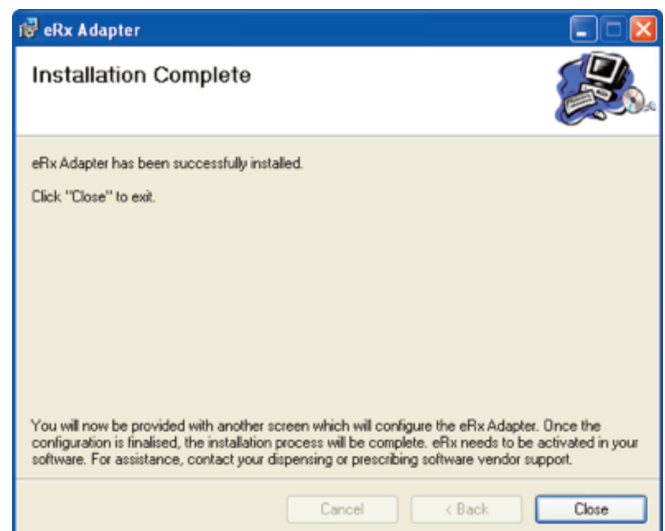
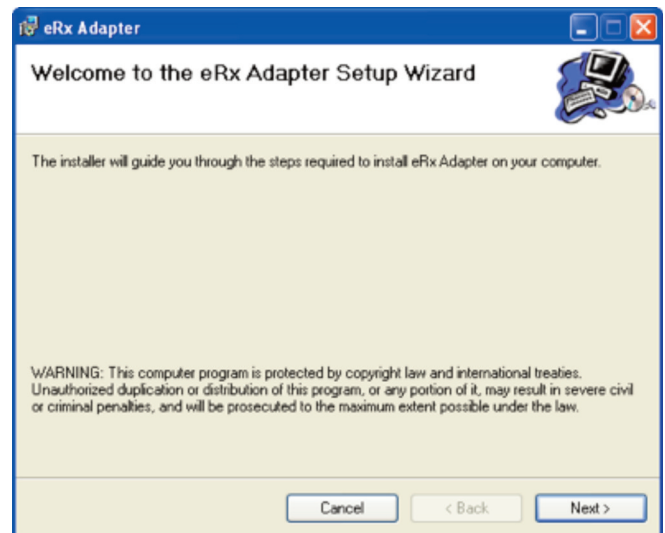
Run Setup.exe from the folder  
"C:\eRx\Erx.StandardAdapter.Installer.Wizard.v1.1.Integration".

### Step 2

Click **Next**

### Step 3

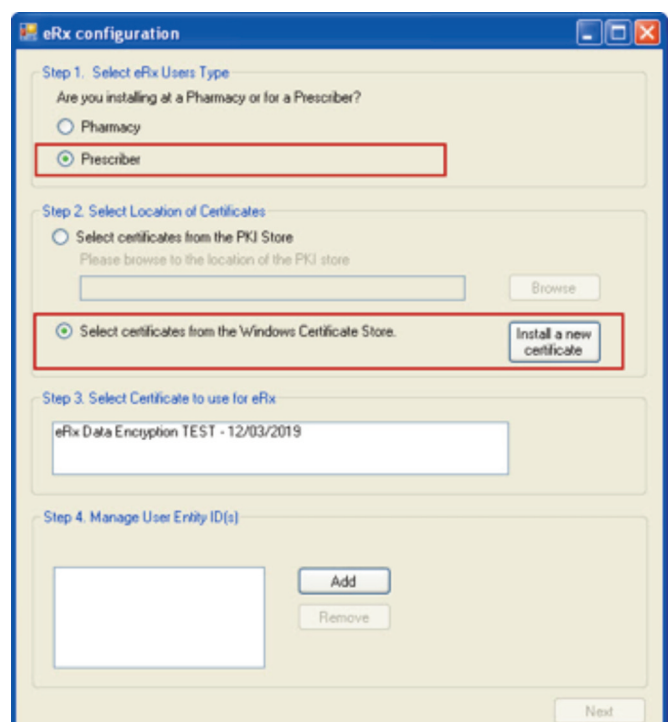
Click **Close** once the installation process completed.



## B: Configure eRx

### Step 1

Select eRx user type as "**Prescriber**" and click  
"**Install a new certificate**" to select location  
of Medtech certificates.



## Step 2

Select the Install a new certificate button. Navigate/browse to where the SITES Medicare certificates are stored (usually on CD). Select the file called **FAC\_Sign.p12**. The PKI sign key must be the FAC\_Sign.p12.

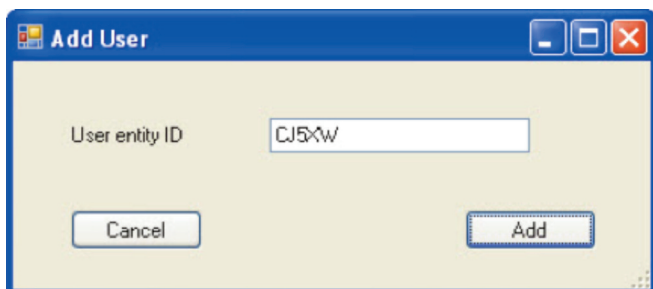
## Step 3

Enter the certificate file's password. NB The password for the Medicare certificates – usually received on letter from Medicare with the certificates or a security note similar to the ones your bank PIN comes on. Then select Import.

## Step 4

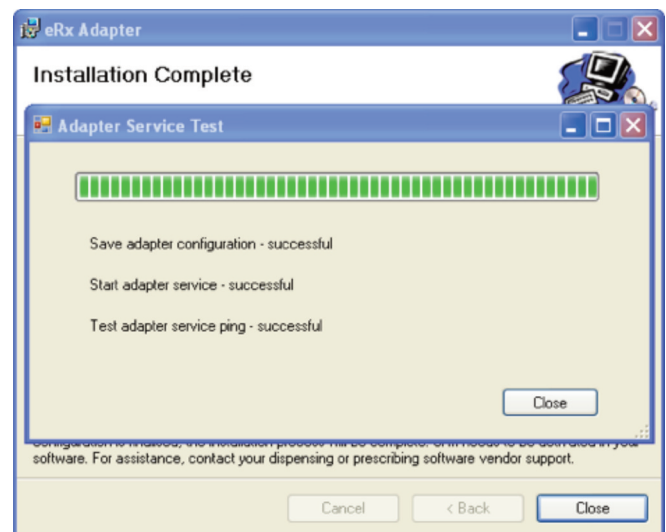
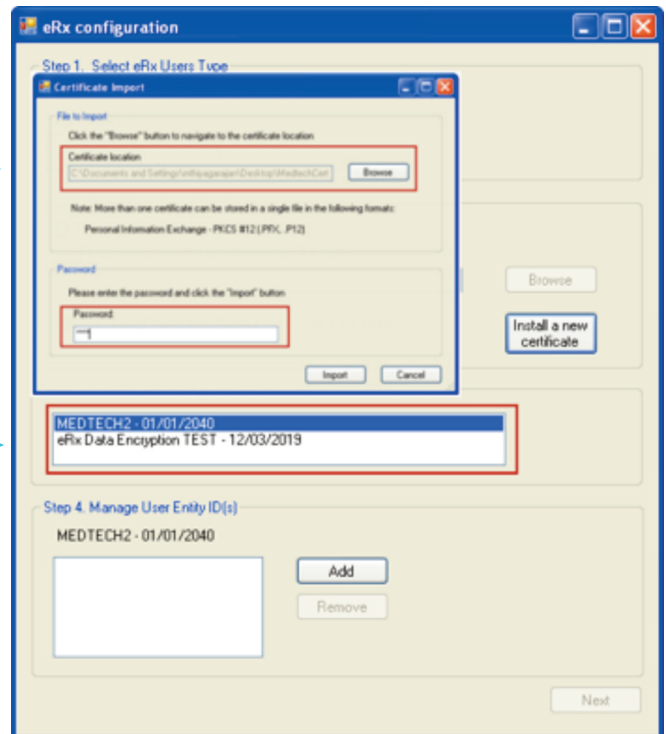
Click "Add" in the eRx Configuration screen to enter the "Entity ID" for each doctor who wants to use eRx.

**Note:** Any number of Entity ID's can be added, only if their Medtech Certificates are available.



## Step 5

On selecting the eRx User Type, Medtech Certificates and Entity ID's, click "Next" to complete the eRx Configuration.



## C: Enable eRx

1. Open the **MTAUEVO.INI** configuration file in Notepad (usually found in the directory '...\Bin').
2. Verify whether the following parameters are set exactly (the text **IS** case sensitive):  
[ERX]  
**HASERX=Y**  
HOST=<Actual IP address of the server where Medtech Evolution is installed>  
PORT=3440  
HASERXLOG=N
3. Verify whether the **HOST** and **PORT** values are accurate as provided.
4. Save the **MTAUEVO.ini** configuration file and restart the **Medtech Evolution** application to apply these changes.
5. Restart the MTAUEVOIntegrationService service.

## D: Activate each Doctor

### Step 1

Go to **Setup** **Staff** **Member**. Click on the appropriate Staff member from the list

### Step 2

Click on the **Provider** tab and tick the **Print Barcode using eRx** checkbox to enable Barcode printing in a prescription.

### Step 3

Enter a valid 'eRx Entity ID' for the location of the provider's Location Details section – as given to the practitioner at the time of registration"

### Step 4

Click **OK** to complete the setup process for a practitioner to print / send e-Prescription using eRx.

Barcode prints automatically with no additional clicks and no interruption to the doctor's workflow.